

ISM CAMPUS PRIVACY NOTICE

To Our Students, Parents, Staff, and Visitors:

Welcome to International School Manila! This notice explains how we collect and use personal information within our school premises to keep everyone safe. We are committed to protecting your privacy and following the Data Privacy Act of 2012. This includes the guidelines from the National Privacy Commission (NPC), especially the rules on protecting children's information.

What Information We Collect and Why

CCTV Cameras: We use security cameras (CCTV) to monitor common areas like hallways, entrances, and playgrounds. This is for the safety of our students and staff, to prevent accidents, and to protect school property from damage or theft.

Visitor Logbook

If you are a visitor, we will ask for your name, contact details, and the purpose of your visit. This helps us know who is on campus at all times to ensure a secure environment.

Child-Oriented Transparency

Since many of our data subjects are children, we make sure this notice is easy to understand. We are careful to process their data with their best interests in mind.

How We Keep Your Information Safe

Limited Access: Only authorized school staff, like our security team and school administrators, can view the collected information. They are trained to keep your data private and confidential.

Data Retention

We only keep CCTV footage for a short time up to 29 days, unless it is needed for an investigation. After that, it is securely deleted.

Contact Us

If you have any questions about this notice or how we handle your personal data, please contact our Data Protection Officer (DPO).

Data Protection Officer
dpo@ismanila.org
(632) 8840.8400

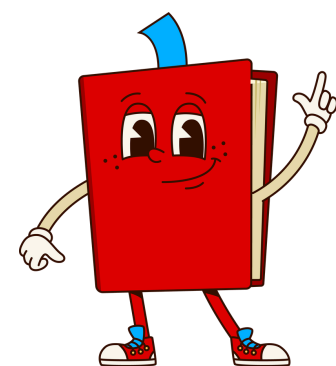
International School Manila
University Pkwy, Taguig, 1634
Metro Manila



Our School's Promise to Keep You Safe



What information do we collect?



- Your name and grade
- What you learn in class
- Photos and videos from school events

Why do we collect it?



- To help you learn
- To celebrate your achievements

Who do we share it with?



- Your teachers
- Your parents
- Trusted school partners (bus service, trip providers)

Scan for more details:

